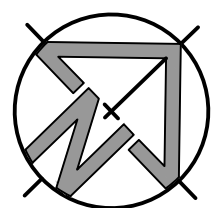
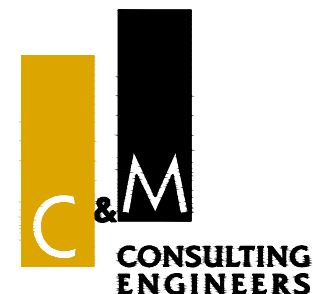
**NOT FOR CONSTRUCTION**

| REV | DES | DATE | VER | DATE | DESCRIPTION |
|-----|------|----------|------|----------|---------------------------|
| 03 | W.M. | 12/04/18 | A.M. | 12/04/18 | RE-ISSUED FOR DA APPROVAL |
| 02 | W.M. | 14/09/16 | A.M. | 14/09/16 | RE-ISSUED FOR DA APPROVAL |
| 01 | W.M. | 19/10/15 | A.M. | 19/10/15 | ISSUED FOR DA APPROVAL |



CLIENT



CIVIL AND HYDRAULIC
ENGINEERING DESIGN AND
PROJECT MANAGEMENT

SUITE 26
11 - 13 BROOKHOLLOW AVE
BAULKHAM HILLS NSW 2153

PHONE: (02) 9680 3100
FAX: (02) 9634 6989
ABN 21 118 134 240

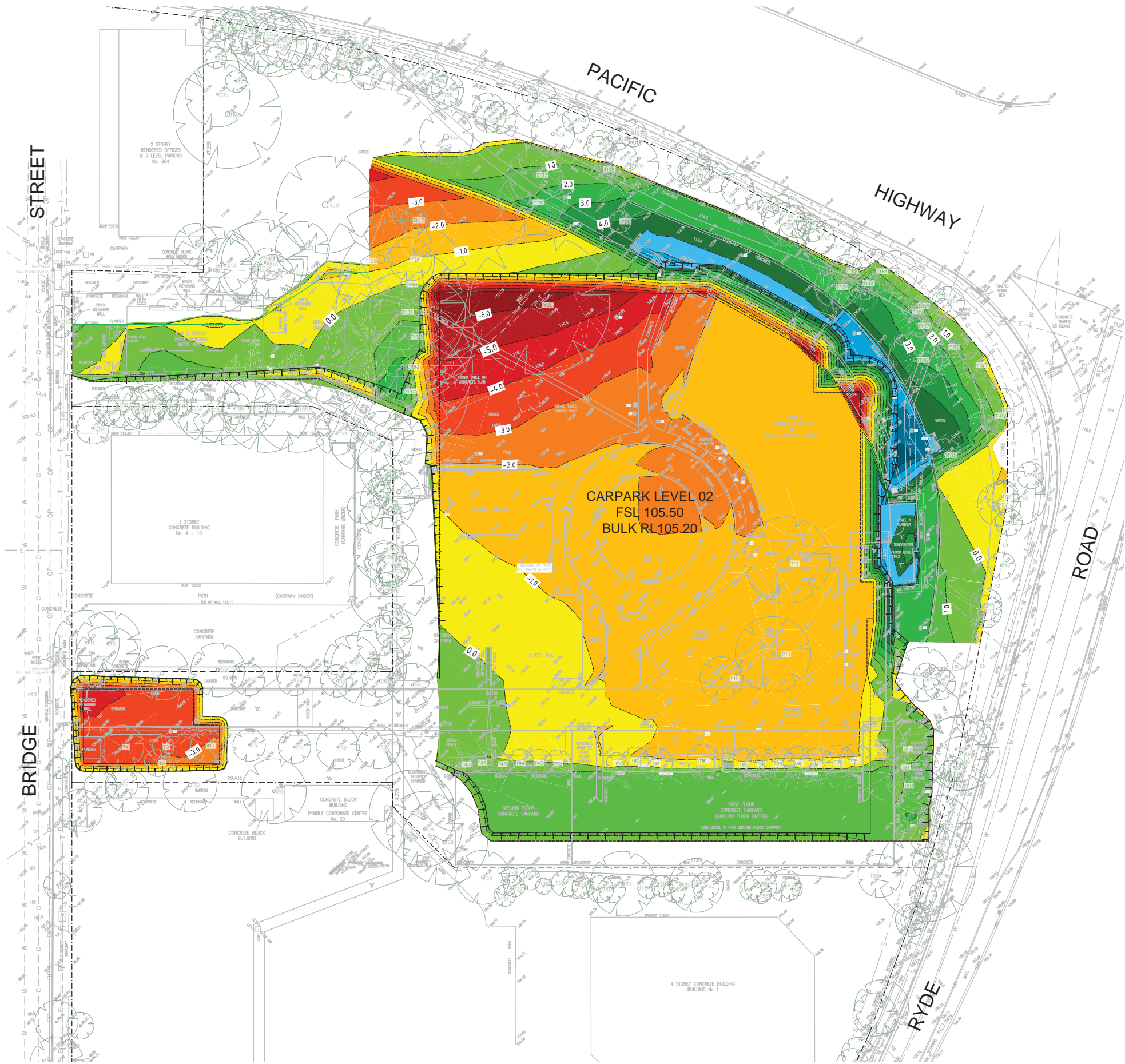
| | | | |
|----------|-----------|------------|----------|
| DESIGNED | W.MARTIN | DATE | 19/10/15 |
| VERIFIED | A.MANCONI | DATE | 19/10/15 |
| DRAWN | W.MARTIN | SCALE @ A1 | 1:200 |

© THIS DRAWING AND DESIGN IS THE COPYRIGHT OF C&M CONSULTING ENGINEERS PTY. LTD. NO PART OF THIS DRAWING OR DESIGN SHALL BE REPRODUCED OR USED WITHOUT PRIOR WRITTEN CONSENT FROM C&M CONSULTING ENGINEERS PTY. LTD.

BUNNINGS WAREHOUSE PYMBLE, 950 PACIFIC HIGHWAY

GENERAL ARRANGEMENT PLAN
WAREHOUSE LEVEL 1 - SHEET 2

STATUS DEVELOPMENT APPLICATION DRAWING No. 01112_DA207 REVISION 03



| Levels Table | | | | | |
|---|------------|----------|--------|---------------------|----------------|
| No. | From Depth | To Depth | Colour | Depth Range Volume | |
| 1 | -7.000 | -6.000 | | 28m | CUT |
| 2 | -6.000 | -5.000 | | 199m ³ | CUT |
| 3 | -5.000 | -4.000 | | 475m ³ | CUT |
| 4 | -4.000 | -3.000 | | 1022m ³ | CUT |
| 5 | -3.000 | -2.000 | | 1840m ³ | CUT |
| 6 | -2.000 | -1.000 | | 4566m ³ | CUT |
| 7 | -1.000 | 0.000 | | 7496m ³ | CUT |
| 8 | 0.000 | 1.000 | | 3849m ³ | FILL |
| 9 | 1.000 | 2.000 | | 2343m ³ | FILL |
| 10 | 2.000 | 3.000 | | 1351m ³ | FILL |
| 11 | 3.000 | 4.000 | | 870m ³ | FILL |
| 12 | 4.000 | 5.000 | | 551m ³ | FILL |
| 13 | 5.000 | 6.000 | | 230m ³ | FILL |
| 14 | 6.000 | 7.000 | | 98m ³ | FILL |
| 15 | 7.000 | 8.000 | | 32m ³ | FILL |
| 16 | 8.000 | 9.000 | | 2m ³ | FILL |
| PRELIMINARY CUT VOLUME = | | | | 15626m ³ | |
| PRELIMINARY FILL VOLUME = | | | | 9326m ³ | |
| PRELIMINARY NET VOLUME = | | | | 6300m ³ | (CUT TO SPOIL) |
| EARTHWORKS NOTES: | | | | | |
| PRELIMINARY BULK EARTHWORKS VOLUMES ARE BASED ON: | | | | | |
| - 150mm STRIPPING OF EXISTING SURFACE PRIOR TO EARTHWORKS. | | | | | |
| - PAVEMENT BOXED OUT 300mm BELOW FINISHED BASEMENT LEVEL TO SUBGRADE. | | | | | |
| - EARTHWORKS QUANTITY DOES NOT INCLUDE ALLOWANCES FOR EXCAVATION OF FOOTINGS. | | | | | |
| - EARTHWORKS QUANTITY DOES NOT INCLUDE ALLOWANCES FOR STORMWATER, SEWER & SERVICE TRENCHING. | | | | | |
| EARTHWORKS QUANTITIES SHOWN ARE FOR INFORMATION ONLY - TENDERERS SHALL DETERMINE THEIR OWN QUANTITIES BASED ON THEIR OWN CALCULATIONS AND ASSUMPTIONS | | | | | |



NOT FOR CONSTRUCTION

| | | | | | |
|------|------|----------|------|----------|---|
| 06 | W.M. | 14/09/16 | A.M. | 14/09/16 | RE-ISSUED FOR DA APPROVAL |
| 05 | W.M. | 19/10/15 | A.M. | 19/10/15 | RE-ISSUED FOR DA APPROVAL |
| 04 | W.M. | 05/12/14 | A.M. | 05/12/14 | GENERAL AMENDMENTS, RE-ISSUED FOR DA APPROVAL |
| 03 | W.M. | 01/12/14 | A.M. | 01/12/14 | ISSUED FOR DA APPROVAL |
| 02 | W.M. | 15/08/14 | A.M. | 15/08/14 | ISSUED FOR COORDINATION |
| 01 | W.M. | 23/07/14 | A.M. | 23/07/14 | ISSUED FOR COORDINATION |
| REV. | DES. | DATE | VER. | DATE | DESCRIPTION |



CLIENT



CIVIL AND HYDRAULIC
ENGINEERING DESIGN AND
PROJECT MANAGEMENT

SUITE 26
11 - 13 BROOKHOLLOW AVE
BAULKHAM HILLS NSW 2153

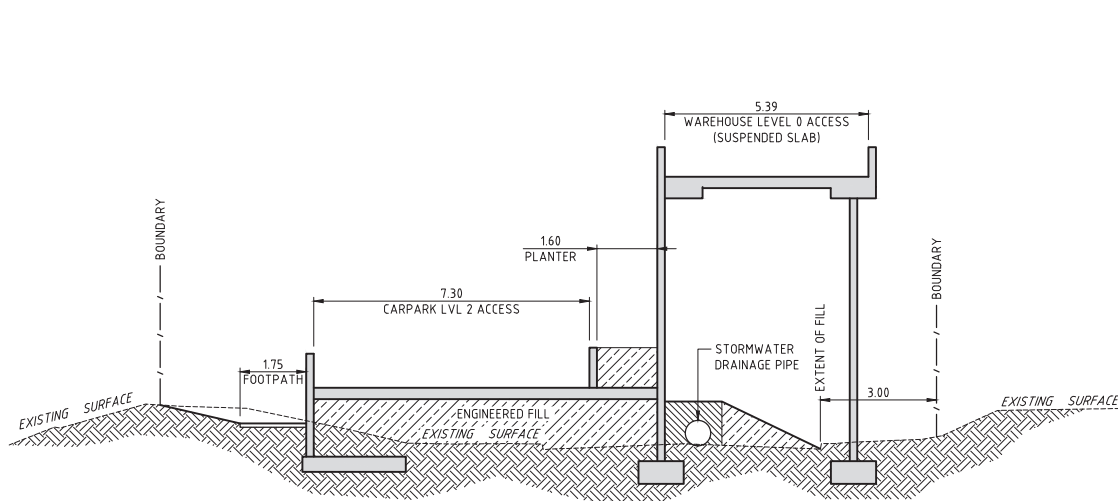
PHONE: (02) 9680 3100
FAX: (02) 9634 6989
ABN 21 118 134 240

| | | | |
|--|-----------|------------|----------|
| DESIGNED | W.MARTIN | DATE | 25/07/14 |
| VERIFIED | A.MANCONE | DATE | 25/07/14 |
| DRAWN | W.MARTIN | SCALE @ A1 | 1:400 |
| © THIS DRAWING AND DESIGN IS THE COPYRIGHT OF C&M CONSULTING ENGINEERS PTY. LTD. NO PART OF THIS DRAWING OR DESIGN SHALL BE REPRODUCED OR USED WITHOUT PRIOR WRITTEN CONSENT FROM C&M CONSULTING ENGINEERS PTY. LTD. | | | |

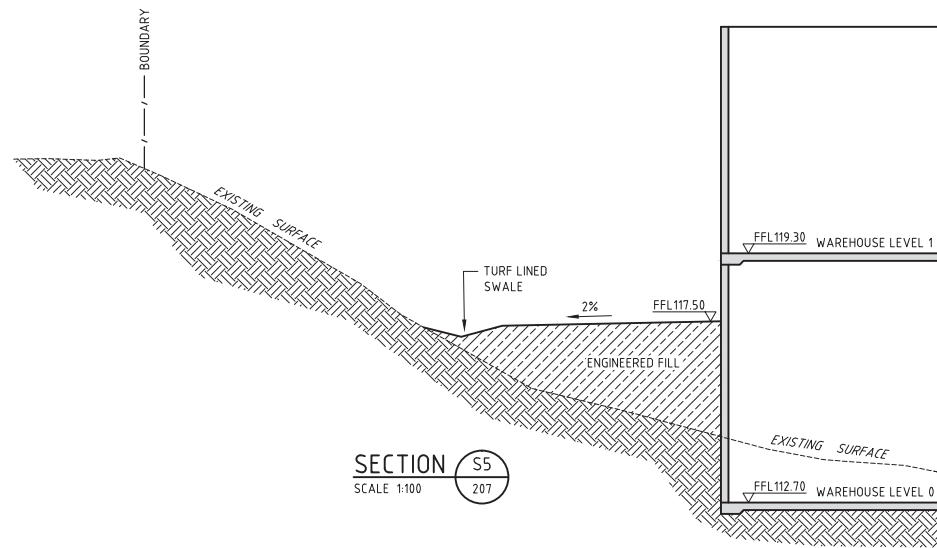
BUNNINGS WAREHOUSE PYMBLE, 950 PACIFIC HIGHWAY

BULK EARTHWORKS
CUT / FILL PLAN & QUANTITIES

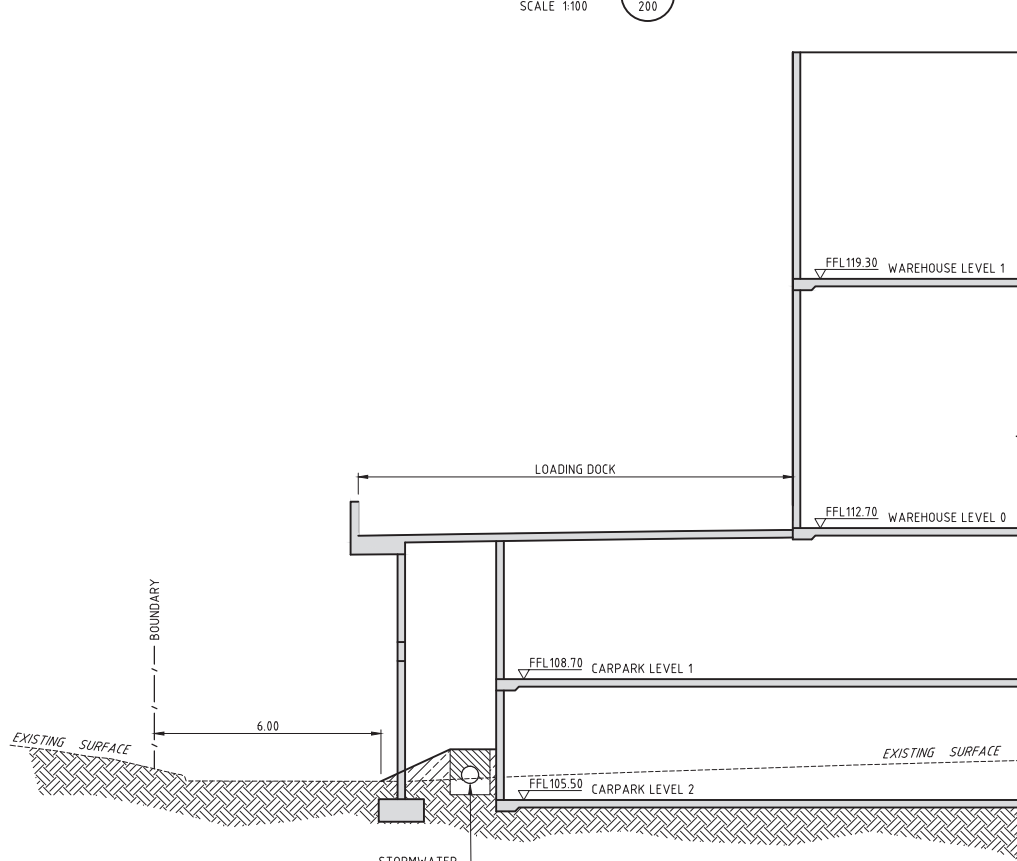
STATUS DEVELOPMENT APPLICATION DRAWING No. 01112_DA231 REVISION 06



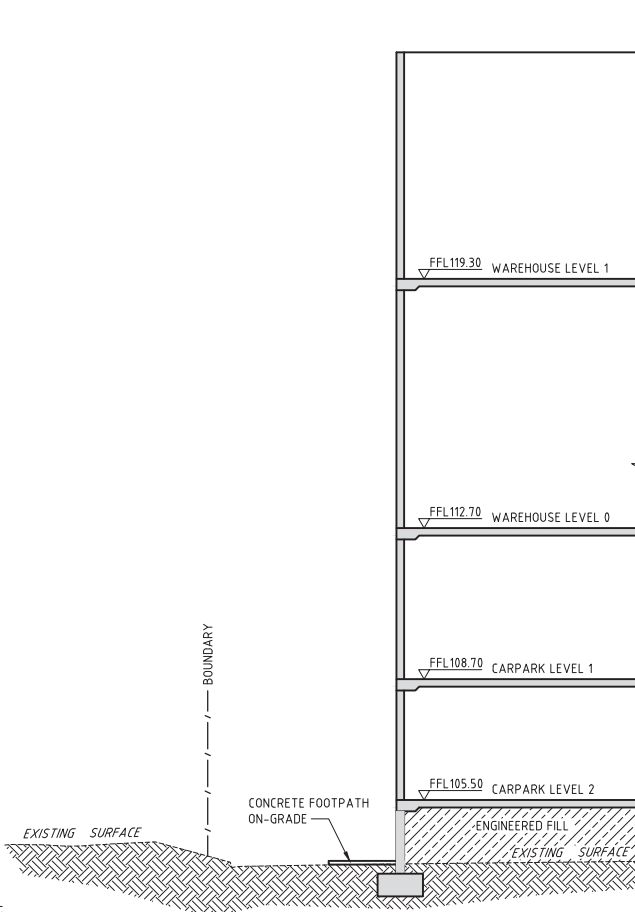
SECTION S1
SCALE 1:100



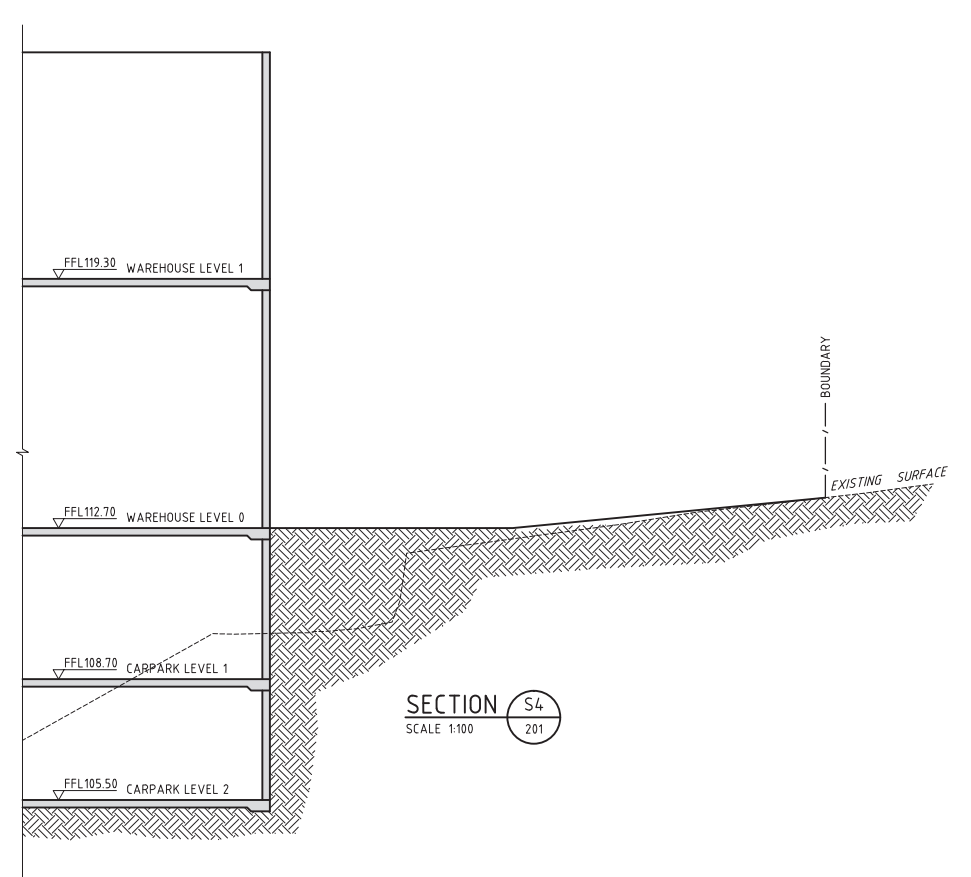
SECTION S5
SCALE 1:100



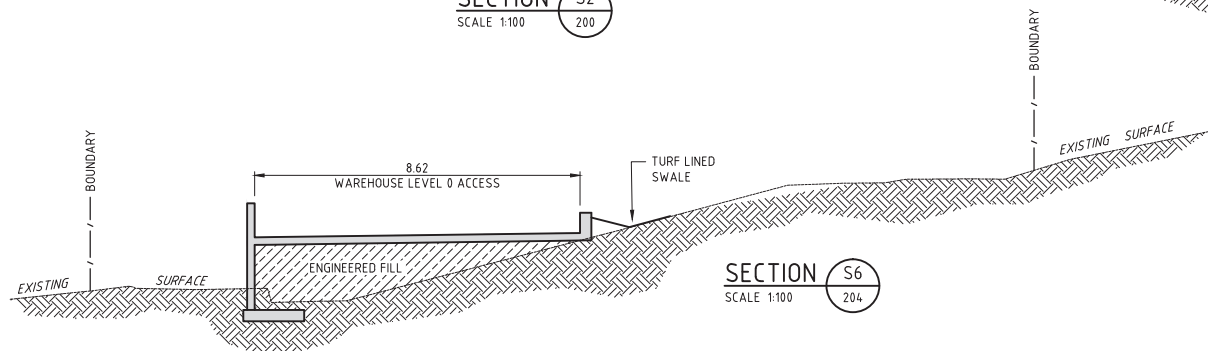
SECTION S2
SCALE 1:100



SECTION S3
SCALE 1:100



SECTION S4
SCALE 1:100



SECTION S6
SCALE 1:100



NOT FOR CONSTRUCTION

| REV. | DES. | DATE | VER. | DATE | DESCRIPTION |
|------|------|----------|------|----------|---|
| 05 | W.M. | 14/09/16 | A.M. | 14/09/16 | RE-ISSUED FOR DA APPROVAL |
| 04 | W.M. | 19/10/15 | A.M. | 19/10/15 | RE-ISSUED FOR DA APPROVAL |
| 03 | W.M. | 05/12/14 | A.M. | 05/12/14 | GENERAL AMENDMENTS, RE-ISSUED FOR DA APPROVAL |
| 02 | W.M. | 01/12/14 | A.M. | 01/12/14 | ISSUED FOR DA APPROVAL |
| 01 | W.M. | 15/08/14 | A.M. | 15/08/14 | ISSUED FOR COORDINATION |



CIVIL AND HYDRAULIC
ENGINEERING DESIGN AND
PROJECT MANAGEMENT

SUITE 26
11 - 13 BROOKHOLLOW AVE
BAULKHAM HILLS NSW 2153

PHONE: (02) 9680 3100
FAX: (02) 9634 6989
ABN 21 118 134 240

| | | | |
|--|-----------|------------|----------|
| DESIGNED | W.MARTIN | DATE | 12/08/14 |
| VERIFIED | A.MANCONE | DATE | 12/08/14 |
| DRAWN | W.MARTIN | SCALE @ A1 | 1:100 |
| © THIS DRAWING AND DESIGN IS THE COPYRIGHT OF C&M CONSULTING ENGINEERS PTY. LTD. NO PART OF THIS DRAWING OR DESIGN SHALL BE REPRODUCED OR USED WITHOUT PRIOR WRITTEN CONSENT FROM C&M CONSULTING ENGINEERS PTY. LTD. | | | |

| | | | |
|--|-------------------------|-------------|-------------|
| BUNNINGS WAREHOUSE PYMBLE, 950 PACIFIC HIGHWAY | | | |
| SITE SECTIONS | | | |
| STATUS | DEVELOPMENT APPLICATION | DRAWING No. | 01112_DA351 |
| REVISION | 05 | | |



| | | | | | |
|------|------|----------|------|----------|---------------------------|
| 07 | W.M. | 14/09/16 | A.M. | 14/09/16 | RE-ISSUED FOR DA APPROVAL |
| 06 | W.M. | 03/03/16 | A.M. | 03/03/16 | RETAINING WALL REMOVED |
| 05 | W.M. | 19/10/15 | A.M. | 19/10/15 | RE-ISSUED FOR DA APPROVAL |
| 04 | W.M. | 05/12/14 | A.M. | 05/12/14 | RE-ISSUED FOR DA APPROVAL |
| 03 | W.M. | 01/12/14 | A.M. | 01/12/14 | ISSUED FOR DA APPROVAL |
| 02 | W.M. | 15/08/14 | A.M. | 15/08/14 | ISSUED FOR COORDINATION |
| REV. | DES. | DATE | VER. | DATE | DESCRIPTION |



| |
|--------|
| CLIENT |
|--------|



CIVIL AND HYDRAULIC
ENGINEERING DESIGN AND
PROJECT MANAGEMENT

SUITE 26
11 - 13 BROOKHOLLOW AVE
BAULKHAM HILLS NSW 2153

PHONE: (02) 9680 3100
FAX: (02) 9634 6989

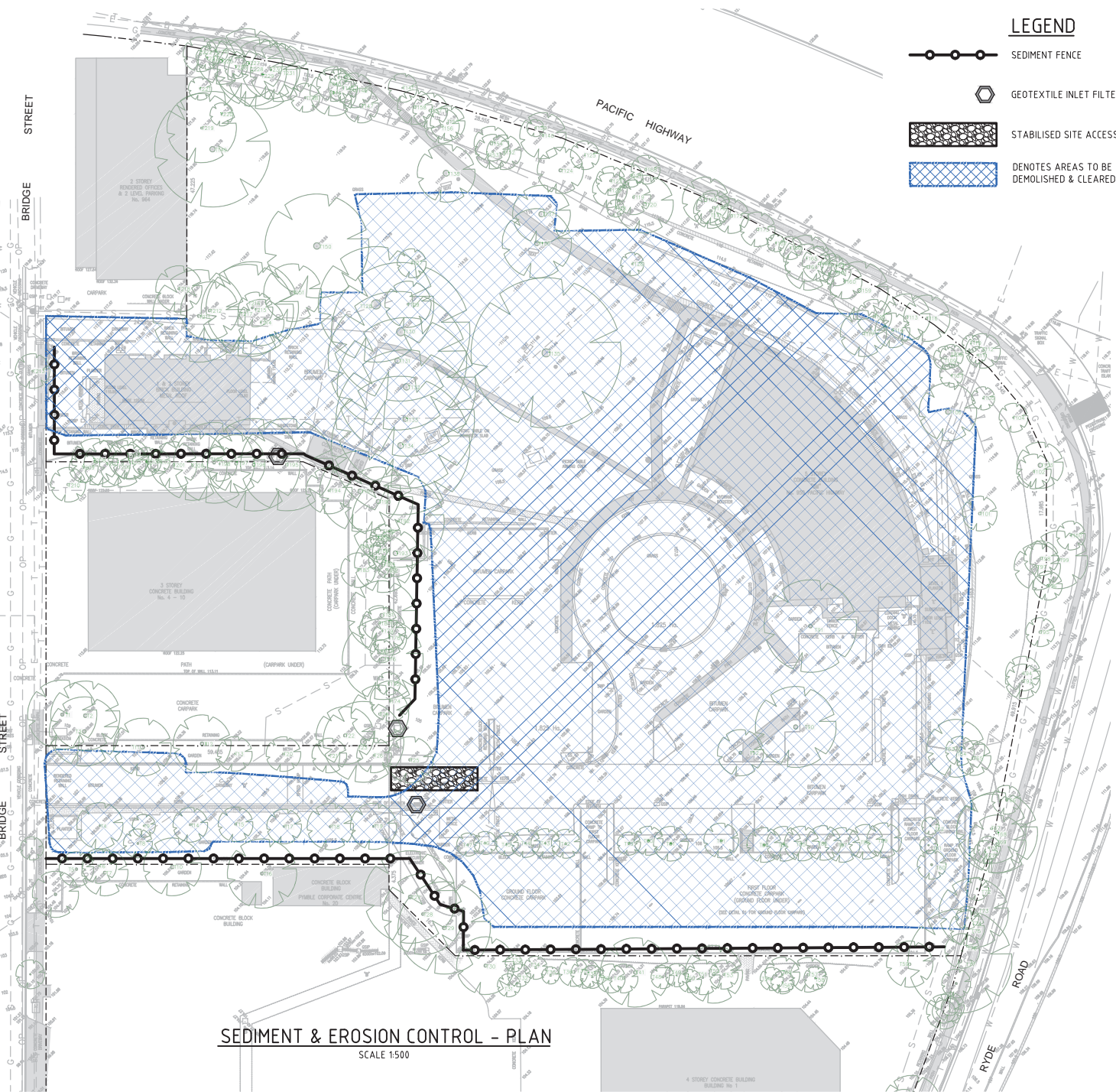
ABN 21 118 134 240

| | | | |
|--|-----------|------------|----------|
| DESIGNED | W.MARTIN | DATE | 23/07/14 |
| VERIFIED | A.MANCONE | DATE | 23/07/14 |
| DRAWN | W.MARTIN | SCALE @ A1 | AS NOTED |
| © THIS DRAWING AND DESIGN IS THE COPYRIGHT OF C&M CONSULTING ENGINEERS PTY LTD. NO PART OF THIS DRAWING OR DESIGN SHALL BE REPRODUCED OR USED WITHOUT PRIOR WRITTEN CONSENT FROM C&M CONSULTING ENGINEERS PTY LTD. | | | |

BUNNINGS WAREHOUSE PYMBLE, 950 PACIFIC HIGHWAY

GENERAL DETAILS - OSD TANK

| | | | | | |
|--------|-------------------------|-------------|-------------|----------|----|
| STATUS | DEVELOPMENT APPLICATION | DRAWING No. | 01112_DA501 | REVISION | 07 |
|--------|-------------------------|-------------|-------------|----------|----|



ENVIRONMENTAL CONTROL NOTES:

EROSION AND SEDIMENT CONTROL

1. THE CONTRACTOR SHALL BE SOLELY RESPONSIBLE FOR THE CONTROL OF EROSION AND SEDIMENTATION TO THE SATISFACTION OF COUNCIL, THE RELEVANT STATE AUTHORITIES AND THE SUPERINTENDENT. TO THIS END, THE EROSION AND SEDIMENTATION CONTROLS SHOWN ON THE DRAWINGS SHALL ONLY BE USED AS A GUIDE BY THE CONTRACTOR, AND SHALL REPRESENT THE MINIMUM REQUIREMENT ONLY.
2. NO CONSTRUCTION WORKS ARE TO COMMENCE ON SITE UNTIL ALL EROSION AND SEDIMENT CONTROL MEASURES ARE IN PLACE AND HAVE BEEN INSPECTED AND APPROVED BY THE COUNCIL ENGINEER AND/OR SUPERINTENDENT.
3. ALL EROSION AND SEDIMENT CONTROL MEASURES SHALL BE REGULARLY INSPECTED, IN PARTICULAR AFTER STORMS, AND REPAIRED OR MAINTAINED AS REQUIRED TO ENSURE THE MEASURES CORRECT AND EFFICIENT FUNCTION THROUGHOUT THE DURATION OF THE WORKS, UNTIL SUCH TIME AS THE COUNCIL ENGINEER AND/OR SUPERINTENDENT AUTHORIZES THE REMOVAL OF SUCH MEASURES.
4. ALL STOCKPILES SHALL BE CLEAR OF ALL TREES AND DRAINAGE LINES INCLUDING OVERLAND FLOW PATHS) AND PROTECTED FROM EROSION.
5. N THE CASE OF THE TEMPORARY CONSTRUCTION EXIT, THE CONTRACTOR SHALL UNDERTAKE WEEKLY SURFACE CLEANING BY DRAG BROOM OR EQUIVALENT, TO REMOVE ALL BUILD UP OF FOREIGN MATERIAL TO THE SATISFACTION OF THE SUPERINTENDENT.

TRAFFIC CONTROLS

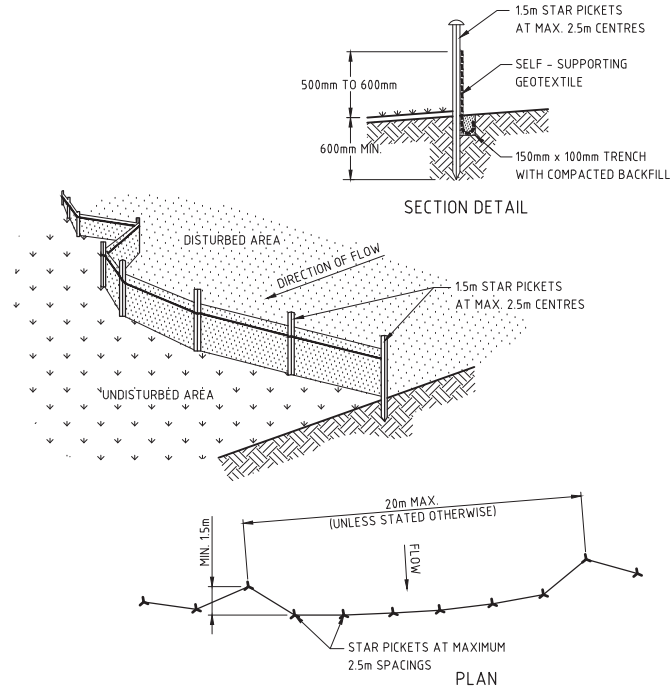
1. THE CONTRACTOR SHALL BE SOLELY RESPONSIBLE FOR THE CONTROL OF TRAFFICS INCLUDING VEHICLES AND PEDESTRIANS TO THE SATISFACTION OF COUNCIL, THE RELEVANT STATE AUTHORITIES AND THE SUPERINTENDENT.
2. THE CONTRACTOR IS TO PREPARE A TRAFFIC MANAGEMENT PLAN TO THE REQUIREMENTS OF THE RMS - TRAFFIC CONTROL AT WORK SITE, AS 1742 - AUSTRALIAN STANDARD MANUAL OF UNIFORM TRAFFIC CONTROL DEVICES, AND LOCAL COUNCIL STANDARDS.

OTHER ENVIRONMENTAL CONTROLS

1. OTHER ENVIRONMENTAL CONTROLS LIKE NOISE, DUST, VIBRATION, FLORA & FAUNA, FIRE, HAZMAT, AND CONTAMINATIONS MUST BE CONTROLLED TO THE REQUIREMENT OF THE COUNCIL AND THE RELEVANT STATE AUTHORITIES.

LEGEND

- SEDIMENT FENCE
- GEOTEXTILE INLET FILTER
- STABILISED SITE ACCESS
- DENOTES AREAS TO BE DEMOLISHED & CLEARED

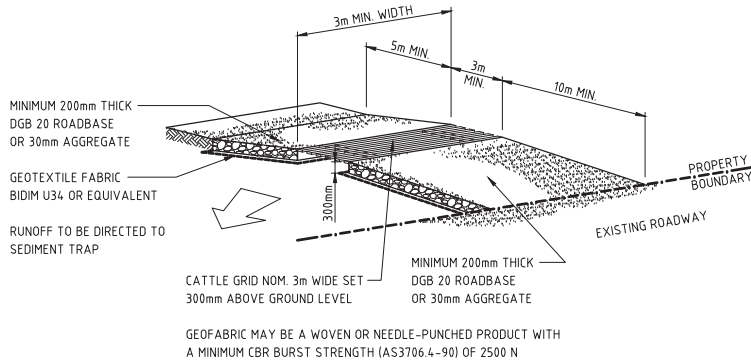


CONSTRUCTION NOTES:

1. CONSTRUCT SEDIMENT FENCES AS CLOSE AS POSSIBLE TO BEING PARALLEL TO THE CONTOURS OF THE SITE, BUT WITH SMALL RETURNS AS SHOWN IN THE DRAWING TO LIMIT THE CATCHMENT AREA OF ANY ONE SECTION. THE CATCHMENT AREA SHOULD BE SMALL ENOUGH TO LIMIT WATER FLOW IF CONCENTRATED AT ONE POINT TO 50 LITRES PER SECOND IN THE DESIGN STORM EVENT, USUALLY THE 10-YEAR EVENT.
2. CUT A 150mm DEEP TRENCH ALONG THE UPSLOPE LINE OF THE FENCE FOR THE BOTTOM OF THE FABRIC TO BE ENTRENCHED.
3. DRIVE 15 METRE LONG STAR PICKETS INTO THE GROUND AT 2.5 METRE INTERVALS (MAX) AT THE DOWNSLOPE EDGE OF THE TRENCH. ENSURE ANY STAR PICKETS ARE FITTED WITH SAFETY CAPS.
4. FIX SELF-SUPPORTING GEOTEXTILE TO THE UPSLOPE SIDE OF THE POSTS ENSURING IT GOES TO THE BASE OF THE TRENCH. FIX THE GEOTEXTILE WITH WIRE TIES OR AS RECOMMENDED BY THE MANUFACTURER. ONLY USE GEOTEXTILE SPECIFICALLY PRODUCED FOR SEDIMENT FENCING. THE USE OF SHADE CLOTH FOR THIS PURPOSE IS NOT SATISFACTORY.
5. JOIN SECTIONS OF FABRIC AT A SUPPORT POST WITH A 150-mm OVERLAP.
6. BACKFILL THE TRENCH OVER THE BASE OF THE FABRIC AND COMPACT IT THOROUGHLY OVER THE GEOTEXTILE.

SEDIMENT FENCE DETAIL

NOT TO SCALE



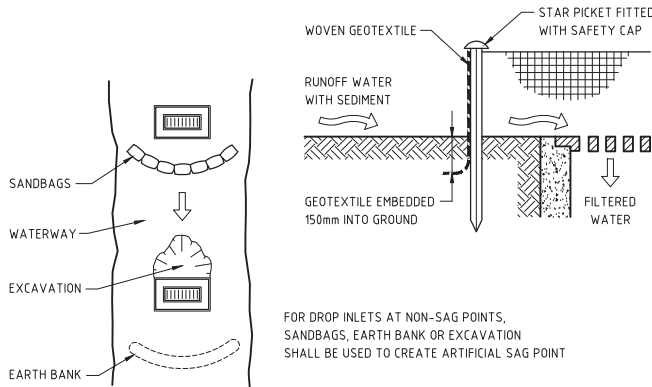
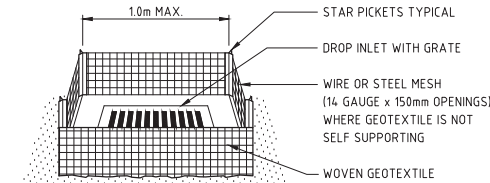
CONSTRUCTION NOTES:

1. STRIP THE TOPSOIL, LEVEL THE SITE AND COMPACT THE SUBGRADE.
2. COVER THE AREA WITH NEEDLE-PUNCHED GEOTEXTILE.
3. CONSTRUCT A 200mm THICK PAD OVER THE GEOTEXTILE USING ROAD BASE OR 30mm AGGREGATE.
4. ENSURE THE STRUCTURE IS AT LEAST 15m LONG OR TO BUILDING ALIGNMENT AND AT LEAST 3m WIDE.
5. WHERE A SEDIMENT FENCE JOINS ONTO THE STABILISED ACCESS, CONSTRUCT A HUMP IN THE STABILISED ACCESS TO DIVERT WATER TO THE SEDIMENT FENCE.

STABILISED SITE ACCESS WITH SHAKER GRID DETAIL

NOT TO SCALE

NOT FOR CONSTRUCTION

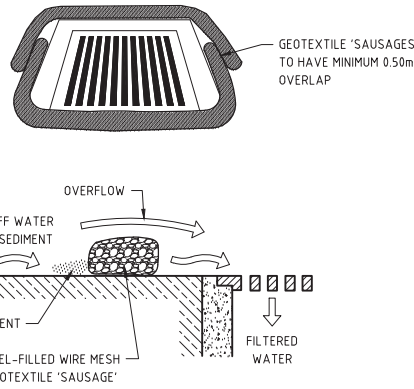


CONSTRUCTION NOTES:

1. FABRICATE A SEDIMENT BARRIER MADE FROM GEOTEXTILE OR STRAW BALES.
2. IN WATERWAYS, ARTIFICIAL SAG POINTS CAN BE CREATED WITH SANDBAGS OR EARTH BANKS AS SHOWN IN THE DRAWING.
3. DO NOT COVER THE INLET WITH GEOTEXTILE UNLESS THE DESIGN IS ADEQUATE TO ALLOW FOR ALL WATERS TO BYPASS IT.

GEOTEXTILE INLET FILTER DETAIL

FOR PITS WITHIN LANDSCAPED AREAS
NOT TO SCALE



CONSTRUCTION NOTES:

1. FABRICATE A SEDIMENT BARRIER MADE FROM GEOTEXTILE OR STRAW BALES.
2. DO NOT COVER THE INLET WITH GEOTEXTILE UNLESS THE DESIGN IS ADEQUATE TO ALLOW FOR ALL WATERS TO BYPASS IT.

GEOTEXTILE INLET FILTER DETAIL

FOR PITS WITHIN PAVEMENT AREAS
NOT TO SCALE



| | | | | | |
|------|------|----------|------|----------|---|
| 06 | W.M. | 14/09/16 | A.M. | 14/09/16 | RE-ISSUED FOR DA APPROVAL |
| 05 | W.M. | 19/10/15 | A.M. | 19/10/15 | RE-ISSUED FOR DA APPROVAL |
| 04 | W.M. | 05/12/14 | A.M. | 05/12/14 | AREA TO BE CLEARED AMENDED, RE-ISSUED FOR DA APPROVAL |
| 03 | W.M. | 01/12/14 | A.M. | 01/12/14 | ISSUED FOR DA APPROVAL |
| 02 | W.M. | 15/08/14 | A.M. | 15/08/14 | ISSUED FOR COORDINATION |
| 01 | W.M. | 23/07/14 | A.M. | 23/07/14 | ISSUED FOR COORDINATION |
| REV. | DES. | DATE | VER. | DATE | DESCRIPTION |



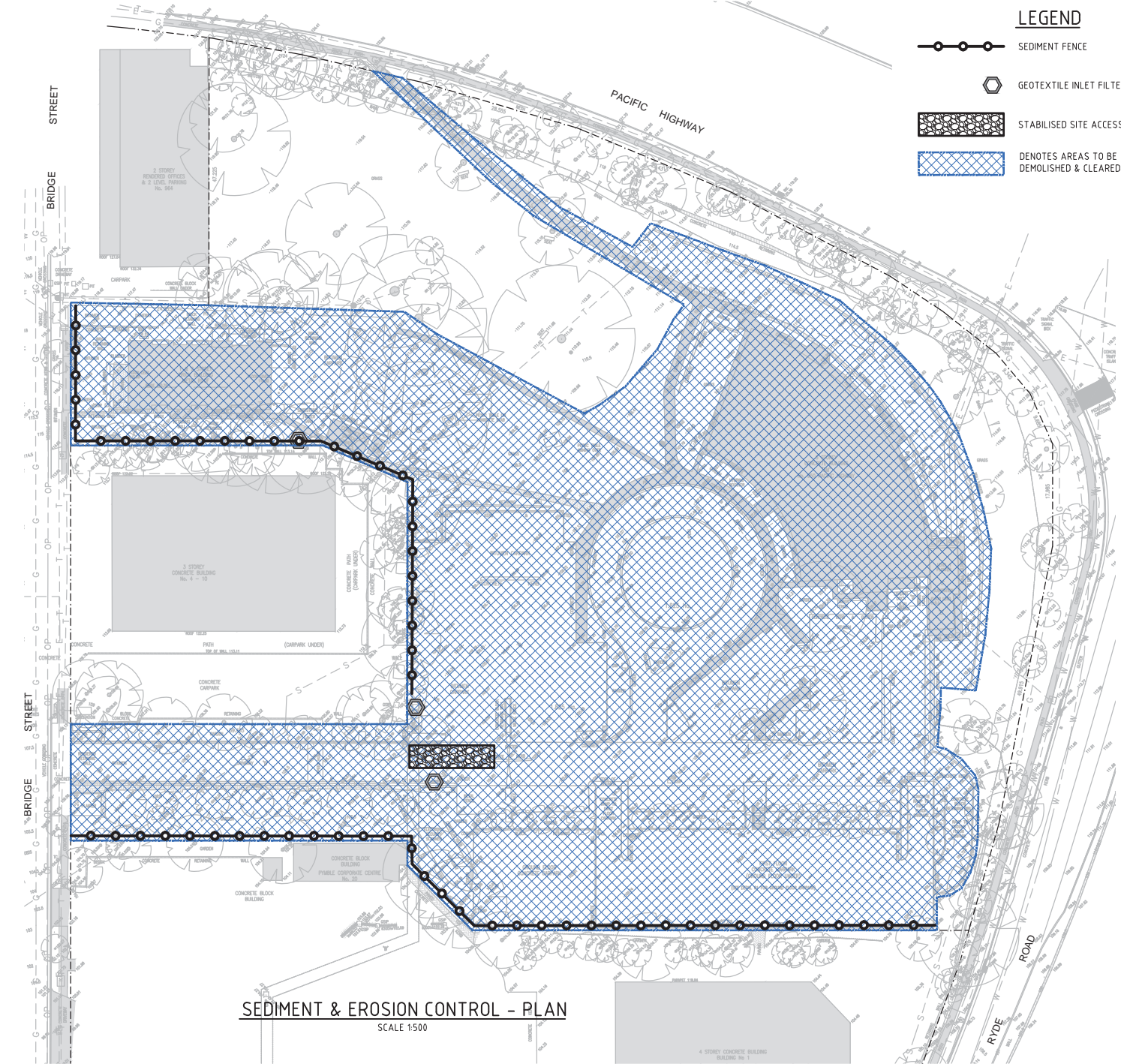
CIVIL AND HYDRAULIC
ENGINEERING DESIGN AND
PROJECT MANAGEMENT

SUITE 26
11 - 13 BROOKHOLLOW AVE
BAULKHAM HILLS NSW 2153

PHONE: (02) 9680 3100
FAX: (02) 9634 6989
ABN 21 118 134 240

| | | | |
|--|-----------|------------|----------|
| DESIGNED | W.MARTIN | DATE | 23/07/14 |
| VERIFIED | A.MANCONE | DATE | 23/07/14 |
| DRAWN | W.MARTIN | SCALE @ A1 | AS NOTED |
| © THIS DRAWING AND DESIGN IS THE COPYRIGHT OF C&M CONSULTING ENGINEERS PTY. LTD. NO PART OF THIS DRAWING OR DESIGN SHALL BE REPRODUCED OR USED WITHOUT PRIOR WRITTEN CONSENT FROM C&M CONSULTING ENGINEERS PTY. LTD. | | | |

| | | | |
|--|-------------------------|------------|-------------|
| BUNNINGS WAREHOUSE PYMBLE, 950 PACIFIC HIGHWAY | | | |
| SEDIMENT & EROSION CONTROL PLAN & DETAILS | | | |
| STATUS | DEVELOPMENT APPLICATION | DRAWING No | 01112_DA631 |
| REVISION | 06 | | |



ENVIRONMENTAL CONTROL NOTES:

EROSION AND SEDIMENT CONTROL

1. THE CONTRACTOR SHALL BE SOLELY RESPONSIBLE FOR THE CONTROL OF EROSION AND SEDIMENTATION TO THE SATISFACTION OF COUNCIL, THE RELEVANT STATE AUTHORITIES AND THE SUPERINTENDENT. TO THIS END, THE EROSION AND SEDIMENTATION CONTROLS SHOWN ON THE DRAWINGS SHALL ONLY BE USED AS A GUIDE BY THE CONTRACTOR, AND SHALL REPRESENT THE MINIMUM REQUIREMENT ONLY.
2. NO CONSTRUCTION WORKS ARE TO COMMENCE ON SITE UNTIL ALL EROSION AND SEDIMENT CONTROL MEASURES ARE IN PLACE AND HAVE BEEN INSPECTED AND APPROVED BY THE COUNCIL ENGINEER AND/OR SUPERINTENDENT.
3. ALL EROSION AND SEDIMENT CONTROL MEASURES SHALL BE REGULARLY INSPECTED, IN PARTICULAR AFTER STORMS, AND REPAIRED OR MAINTAINED AS REQUIRED TO ENSURE THE MEASURES CORRECT AND EFFICIENT FUNCTION THROUGHOUT THE DURATION OF THE WORKS, UNTIL SUCH TIME AS THE COUNCIL ENGINEER AND/OR SUPERINTENDENT AUTHORIZES THE REMOVAL OF SUCH MEASURES.
4. ALL STOCKPILES SHALL BE CLEAR OF ALL TREES AND DRAINAGE LINES INCLUDING OVERLAND FLOW PATHS) AND PROTECTED FROM EROSION.
5. N THE CASE OF THE TEMPORARY CONSTRUCTION EXIT, THE CONTRACTOR SHALL UNDERTAKE WEEKLY SURFACE CLEANING BY DRAG BROOM OR EQUIVALENT, TO REMOVE ALL BUILD UP OF FOREIGN MATERIAL TO THE SATISFACTION OF THE SUPERINTENDENT.

TRAFFIC CONTROLS

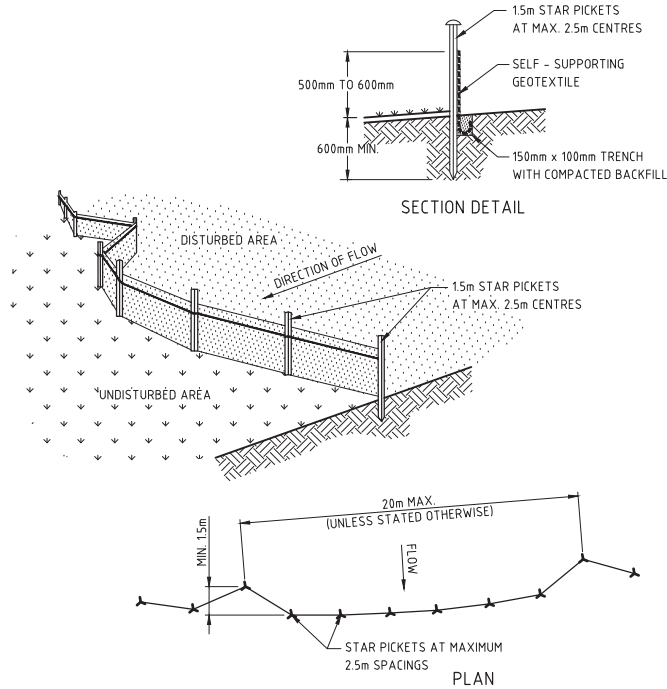
1. THE CONTRACTOR SHALL BE SOLELY RESPONSIBLE FOR THE CONTROL OF TRAFFICS INCLUDING VEHICLES AND PEDESTRIANS TO THE SATISFACTION OF COUNCIL, THE RELEVANT STATE AUTHORITIES AND THE SUPERINTENDENT.
2. THE CONTRACTOR IS TO PREPARE A TRAFFIC MANAGEMENT PLAN TO THE REQUIREMENTS OF THE RMS - TRAFFIC CONTROL AT WORK SITE, AS 1742 - AUSTRALIAN STANDARD MANUAL OF UNIFORM TRAFFIC CONTROL DEVICES, AND LOCAL COUNCIL STANDARDS.

OTHER ENVIRONMENTAL CONTROLS

1. OTHER ENVIRONMENTAL CONTROLS LIKE NOISE, DUST, VIBRATION, FLORA & FAUNA, FIRE, HAZMAT, AND CONTAMINATIONS MUST BE CONTROLLED TO THE REQUIREMENT OF THE COUNCIL AND THE RELEVANT STATE AUTHORITIES.

LEGEND

- SEDIMENT FENCE
- GEOTEXTILE INLET FILTER
- STABILISED SITE ACCESS
- DENOTES AREAS TO BE DEMOLISHED & CLEARED

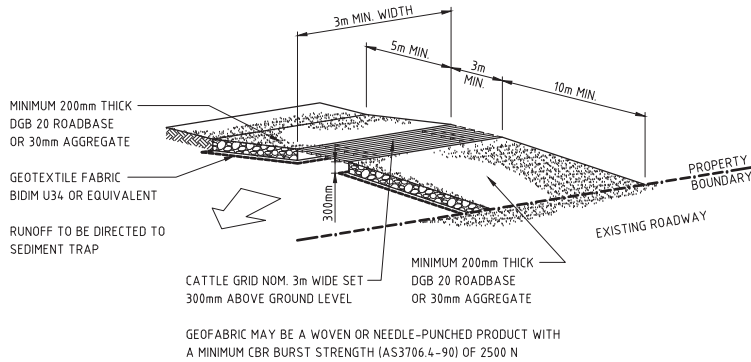


CONSTRUCTION NOTES:

1. CONSTRUCT SEDIMENT FENCES AS CLOSE AS POSSIBLE TO BEING PARALLEL TO THE CONTOURS OF THE SITE, BUT WITH SMALL RETURNS AS SHOWN IN THE DRAWING TO LIMIT THE CATCHMENT AREA OF ANY ONE SECTION. THE CATCHMENT AREA SHOULD BE SMALL ENOUGH TO LIMIT WATER FLOW IF CONCENTRATED AT ONE POINT TO 50 LITRES PER SECOND IN THE DESIGN STORM EVENT, USUALLY THE 10-YEAR EVENT.
2. CUT A 150mm DEEP TRENCH ALONG THE UPSLOPE LINE OF THE FENCE FOR THE BOTTOM OF THE FABRIC TO BE ENTRENCHED.
3. DRIVE 15 METRE LONG STAR PICKETS INTO THE GROUND AT 2.5 METRE INTERVALS (MAX) AT THE DOWNSLOPE EDGE OF THE TRENCH. ENSURE ANY STAR PICKETS ARE FITTED WITH SAFETY CAPS.
4. FIX SELF-SUPPORTING GEOTEXTILE TO THE UPSLOPE SIDE OF THE POSTS ENSURING IT GOES TO THE BASE OF THE TRENCH. FIX THE GEOTEXTILE WITH WIRE TIES OR AS RECOMMENDED BY THE MANUFACTURER. ONLY USE GEOTEXTILE SPECIFICALLY PRODUCED FOR SEDIMENT FENCING. THE USE OF SHADE CLOTH FOR THIS PURPOSE IS NOT SATISFACTORY.
5. JOIN SECTIONS OF FABRIC AT A SUPPORT POST WITH A 150-mm OVERLAP.
6. BACKFILL THE TRENCH OVER THE BASE OF THE FABRIC AND COMPACT IT THOROUGHLY OVER THE GEOTEXTILE.

SEDIMENT FENCE DETAIL

NOT TO SCALE

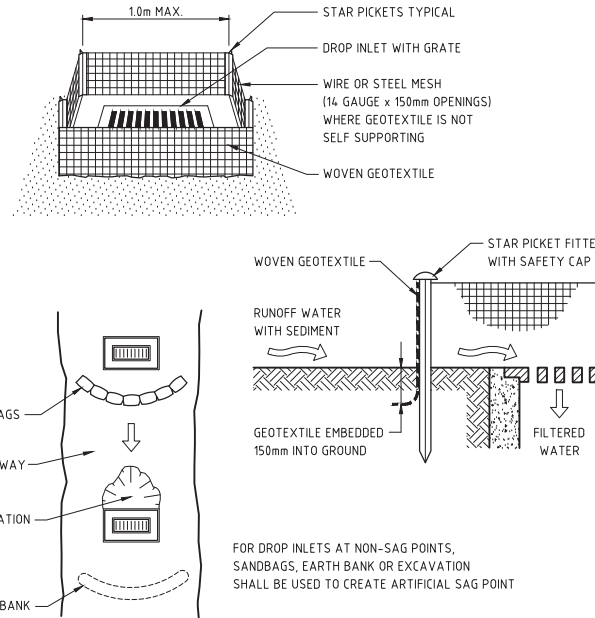


CONSTRUCTION NOTES:

1. STRIP THE TOPSOIL, LEVEL THE SITE AND COMPACT THE SUBGRADE.
2. COVER THE AREA WITH NEEDLE-PUNCHED GEOTEXTILE.
3. CONSTRUCT A 200mm THICK PAD OVER THE GEOTEXTILE USING ROAD BASE OR 30mm AGGREGATE.
4. ENSURE THE STRUCTURE IS AT LEAST 15m LONG OR TO BUILDING ALIGNMENT AND AT LEAST 3m WIDE.
5. WHERE A SEDIMENT FENCE JOINS ONTO THE STABILISED ACCESS, CONSTRUCT A HUMP IN THE STABILISED ACCESS TO DIVERT WATER TO THE SEDIMENT FENCE.

STABILISED SITE ACCESS WITH SHAKER GRID DETAIL

NOT TO SCALE

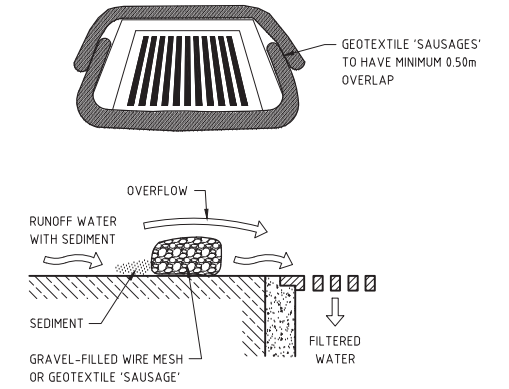


CONSTRUCTION NOTES:

1. FABRICATE A SEDIMENT BARRIER MADE FROM GEOTEXTILE OR STRAW BALES.
2. IN WATERWAYS, ARTIFICIAL SAG POINTS CAN BE CREATED WITH SANDBAGS OR EARTH BANKS AS SHOWN IN THE DRAWING.
3. DO NOT COVER THE INLET WITH GEOTEXTILE UNLESS THE DESIGN IS ADEQUATE TO ALLOW FOR ALL WATERS TO BYPASS IT.

GEOTEXTILE INLET FILTER DETAIL

FOR PITS WITHIN LANDSCAPED AREAS
NOT TO SCALE



CONSTRUCTION NOTES:

1. FABRICATE A SEDIMENT BARRIER MADE FROM GEOTEXTILE OR STRAW BALES.
2. DO NOT COVER THE INLET WITH GEOTEXTILE UNLESS THE DESIGN IS ADEQUATE TO ALLOW FOR ALL WATERS TO BYPASS IT.

GEOTEXTILE INLET FILTER DETAIL

FOR PITS WITHIN PAVEMENT AREAS
NOT TO SCALE



| REV. | DES. | DATE | VER. | DATE | DESCRIPTION |
|------|------|----------|------|----------|---------------------------|
| 04 | W.M. | 14/09/16 | A.M. | 14/09/16 | RE-ISSUED FOR DA APPROVAL |
| 03 | W.M. | 04/03/15 | A.M. | 04/03/15 | ISSUED FOR DA APPROVAL |
| 02 | W.M. | 13/05/14 | A.M. | 13/05/14 | ISSUED FOR DA APPROVAL |
| 01 | W.M. | 14/02/14 | A.M. | 14/02/14 | ISSUED FOR DA APPROVAL |



CIVIL AND HYDRAULIC
ENGINEERING DESIGN AND
PROJECT MANAGEMENT

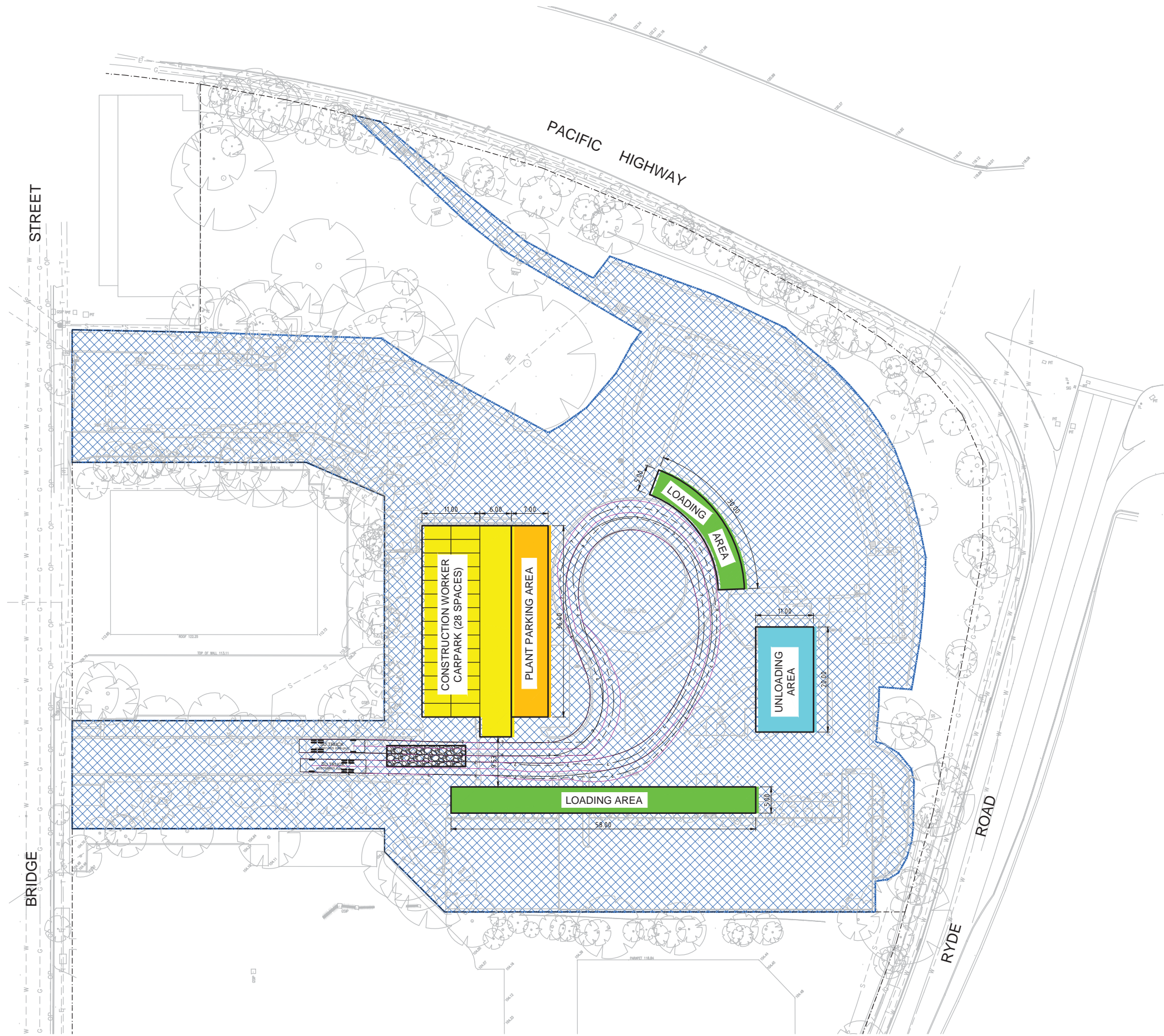
SUITE 26
11 - 13 BROOKHOLLOW AVE
BAULKHAM HILLS NSW 2153

PHONE: (02) 9680 3100
FAX: (02) 9634 6989
ABN 21 118 134 240

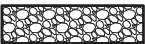





| | | | |
|--|-----------|------------|----------|
| DESIGNED | W.MARTIN | DATE | 14/02/14 |
| VERIFIED | A.MANCONE | DATE | 14/02/14 |
| DRAWN | W.MARTIN | SCALE @ A1 | 1:500 |
| © THIS DRAWING AND DESIGN IS THE COPYRIGHT OF C&M CONSULTING ENGINEERS PTY. LTD. NO PART OF THIS DRAWING OR DESIGN SHALL BE REPRODUCED OR USED WITHOUT PRIOR WRITTEN CONSENT FROM C&M CONSULTING ENGINEERS PTY. LTD. | | | |

| | | | |
|---|-------------------------|-------------|-------------|
| BUNNINGS WAREHOUSE PYMBLE, 950 PACIFIC HIGHWAY | | | |
| ENVIRONMENTAL SITE MANAGEMENT PLAN DEMOLITION WORKS SEDIMENT & EROSION CONTROL PLAN & DETAILS | | | |
| STATUS | DEVELOPMENT APPLICATION | DRAWING No. | 01112_DA701 |
| REVISION | 04 | | |

CAD FILENAME: C:\WAZ\Wollongong Projects\01112 ACAD\DA\01112_DA801.dwg



LEGEND

-  STABILISED SITE ACCESS
-  DENOTES AREAS TO BE DEMOLISHED & CLEARED
-  DENOTES CONSTRUCTION WORKER PARKING AREA
-  DENOTES PLANT/MACHINERY PARKING AREA
-  DENOTES LOADING AREA
-  DENOTES UNLOADING AREA



| REV. | DES. | DATE | VER. | DATE | DESCRIPTION |
|------|------|----------|------|----------|---------------------------|
| 04 | W.M. | 14/09/16 | A.M. | 14/09/16 | RE-ISSUED FOR DA APPROVAL |
| 03 | W.M. | 04/03/15 | A.M. | 04/03/15 | ISSUED FOR DA APPROVAL |
| 02 | W.M. | 13/05/14 | A.M. | 13/05/14 | ISSUED FOR DA APPROVAL |
| 01 | W.M. | 14/02/14 | A.M. | 14/02/14 | ISSUED FOR DA APPROVAL |



CIVIL AND HYDRAULIC
ENGINEERING DESIGN AND
PROJECT MANAGEMENT

SUITE 26
11 - 13 BROOKHOLLOW AVE
BAULKHAM HILLS NSW 2153

PHONE: (02) 9680 3100
FAX: (02) 9634 6989
ABN 21 118 134 240

| | | | |
|--|-----------|------------|----------|
| DESIGNED | W.MARTIN | DATE | 09/05/14 |
| VERIFIED | A.MANCONE | DATE | 09/05/14 |
| DRAWN | W.MARTIN | SCALE @ A1 | 1:400 |
| © THIS DRAWING AND DESIGN IS THE COPYRIGHT OF C&M CONSULTING ENGINEERS PTY. LTD. NO PART OF THIS DRAWING OR DESIGN SHALL BE REPRODUCED OR USED WITHOUT PRIOR WRITTEN CONSENT FROM C&M CONSULTING ENGINEERS PTY. LTD. | | | |

| | | | |
|---|-------------------------|-------------|-------------|
| BUNNINGS WAREHOUSE PYRMBLE, 950 PACIFIC HIGHWAY | | | |
| ENVIRONMENTAL SITE MANAGEMENT PLAN | | | |
| DEMOLITION WORKS | | | |
| SITE VEHICLE MANAGEMENT PLAN | | | |
| STATUS | DEVELOPMENT APPLICATION | DRAWING No. | 01112_DA801 |
| REVISION | 04 | | |